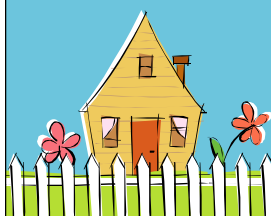


Medical Home Newsletter

Summer 2009



WHAT IS A MEDICAL HOME?

A medical home is not a building, house or hospital, but rather a way to provide high-quality healthcare services in a cost-effective manner.

A medical home is a process of care offered by primary care providers in partnership with families of Children with Special Health Care Needs (CSHCN).

Children and families are recognized, welcomed and supported by their medical home. FamilyHealth–Farmington has a medical home team.

Contact Mary Wild Crea or Bridget for more information. Check out the website www.medicalhome.org.

WHEN IS THE TIME FOR YOUR TEEN TO TRANSITION TO ADULT CARE?

Pediatricians often see children up to age 21.

Planning for transition starts at age 14. It is never too soon to start thinking about it!

Check out helpful resources:

www.health.state.mn.us/mcshn

Click on “Youth and Young Adults – Planning for the Future”

www.PACER.org/publications/specedrights.asp

Click on “New Video! Transition Planning for Children with Disabilities”

WORRIED ABOUT THE H1N1 VIRUS (Swine Flu)?

- Symptoms: sudden onset of fever, cough, sore throat, headache, body aches, sometimes vomiting/diarrhea.
- High-risk children include those with chronic health problems, such as immune deficiency or pulmonary conditions, and should be seen within 24 hours of the onset of symptoms for possible treatment.
- Most healthy children will recover within a few days without treatment. Call the clinic if you have concerns.
- Additional information can be found at www.health.state.mn.us.

DID YOU KNOW THAT THERE ARE NEW CAR SEAT SAFETY LAWS?

Effective July 1, 2009

Minnesota has strengthened its child passenger safety law by requiring a child who is both under age 8 and shorter than 4 feet 9 inches to be fastened in a child safety seat or booster. Under this law, a child cannot use a seat belt alone until they are age 8 or 4 feet 9 inches tall. It is recommended to keep a child in a booster based on their height, rather than their age.

“While they were saying among themselves it cannot be done, it was done.”

Helen Keller

FamilyHealth Medical Clinic - Farmington
4645 Knutsen Drive, Farmington, MN 55024
Phone: 651-460-2300
Fax: 651-460-2301

FamilyHealth Medical Clinic

